

Rosary Gardens SW7

£540,000
Leasehold

South Kensington & Chelsea
Sales

144 Old Brompton Road
London
SW7 4NR
Telephone
020 7373 8883
Facsimile
020 7373 8600

Email
sken.sales@chard.co.uk



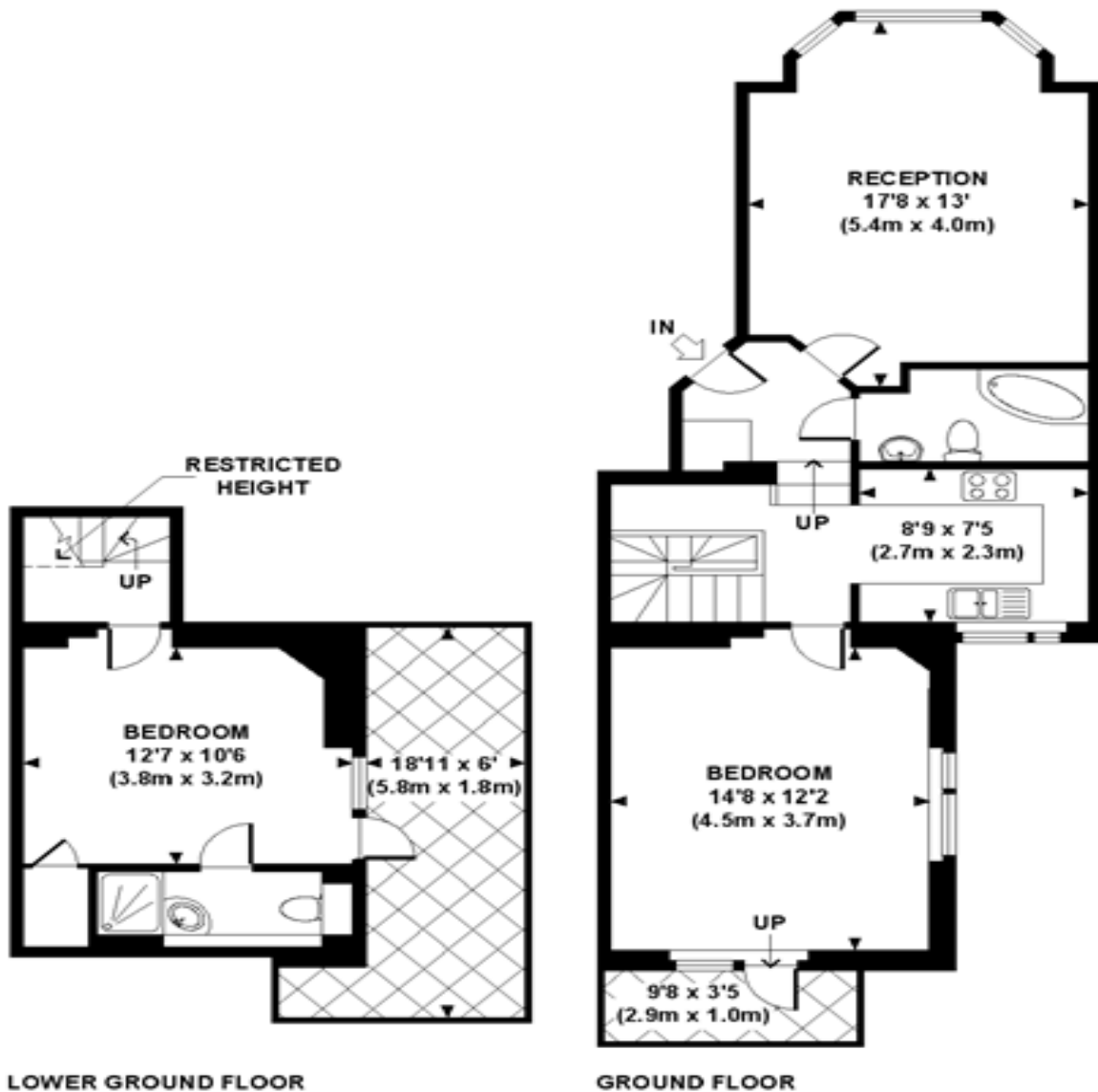
Two bedroom split level flat
with a short lease in South
Kensington

- Two bathrooms (one en-suite)
- Separate Kitchen
- High ceilings
- Courtyard garden
- Raised ground and lower ground floors
- Gloucester Road and South Kensington Undergrounds

Two bedroom flat for sale in a Victorian conversion off Old
 Tenure: Leasehold
 Lease length: From 25 March 1987 to 20 December 2030
 (20 years remaining)
 Service charge: £2,714.26 p.a (2009)
 Ground rent: £120 p.a (2009)
 Floor area: 847 Sq.Ft. (79 Sq.M.)
 Local authority: RBKC

ROSARY GARDENS, SW7

Approx. gross internal area
 847 Sq.Ft. / 79 Sq.M.



FLOOR PLAN

Whilst every attempt has been made to ensure the accuracy of the floor plans contained here, measurements of doors, windows and rooms are approximate and no responsibility is taken for any error, omission or mis-statement. These plans are for representation purposes only as defined by RICS Code of Measuring Practice and should be used as such by any prospective purchaser. The services, systems and appliances listed in this specification have not been tested by Chard and no guarantee as to their operating ability or efficiency can be given.



Property Misdescriptions Act (1991)

These particulars are for general guidance only. They do not form or constitute any part of an offer or contract. Chard has not carried out a structural survey of the property. The services, appliances or specific fittings mentioned in these details have not been tested. Every attempt is made to ensure accuracy, however all photographs, measurements, floorplans and distances are for illustrative purposes only. They must not be relied upon when purchasing carpets and or other fixtures and fittings. Lease details, service charges and ground rents are given as a guide only. They should be checked and confirmed by a licensed conveyancer prior to exchange of contracts. The copyright of all details, photographs and floorplans remain exclusive to chard.