

Carlyle Court, Chelsea
Harbour
SW10

South Kensington & Chelsea

144 Old Brompton Road
London
SW7 4NR



Telephone
020 7373 8883

£1,550,000
Leasehold

Email
grant.o@chard.co.uk



Four bedroom duplex for
sale within a riverside
development in Chelsea

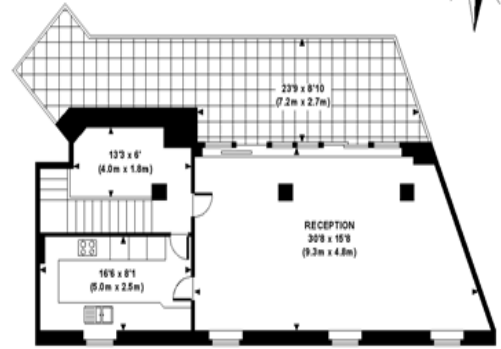
Three bathrooms
Two terraces
Separate kitchen
Two parking spaces
Third & fourth floor
Fulham Broadway Underground

Tenure: Leasehold
 Lease length: 125 years from 25 March 1987 (102 years remaining)
 Service charge: £14,881.00 p.a (2009)
 Garage Spaces: D210-211 £1,432 p.a (2009)
 Ground rent: £400 p.a
 Floor area: 1911 Sq Ft (178 Sq M)
 Local authority: RBKC

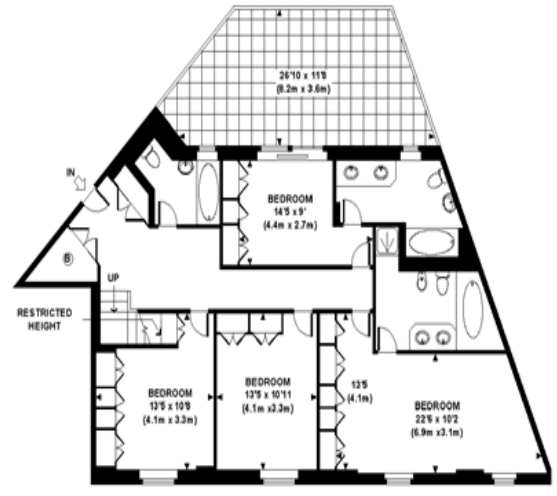


CARLYLE COURT, CHELSEA HARBOUR, SW6

Approx. gross internal area
 1911 Sq.Ft. / 178 Sq.M.



FOURTH FLOOR



THIRD FLOOR

Location

Property Misdescriptions Act (1991)

These particulars are for general guidance only. They do not form or constitute any part of an offer or contract. Chard has not carried out a structural survey of the property. The services, appliances or specific fittings mentioned in these details have not been tested. Every attempt is made to ensure accuracy, however all photographs, measurements, floorplans and distances are for illustrative purposes only. They must not be relied upon when purchasing carpets and or other fixtures and fittings. Lease details, service charges and ground rents are given as a guide only. They should be checked and confirmed by a licensed conveyancer prior to exchange of contracts. The copyright of all details, photographs and floorplans remain exclusive to chard.

FLOOR PLAN

Whilst every attempt has been made to ensure the accuracy of the floor plans contained here, measurements of doors, windows and rooms are approximate and no responsibility is taken for any error, omission or mis-statement. These plans are for representation purposes only as defined by RICS Code of Measuring Practice and should be used as such by any prospective purchaser. The services, systems and appliances listed in this specification have not been tested by Chard and no guarantee as to their operating ability or efficiency can be given.

